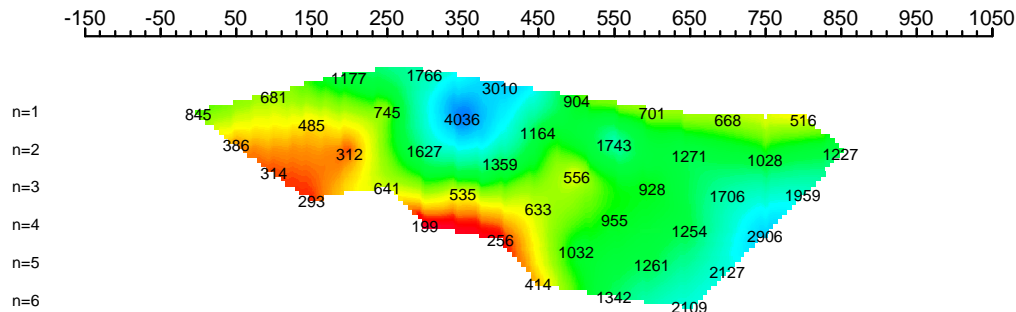
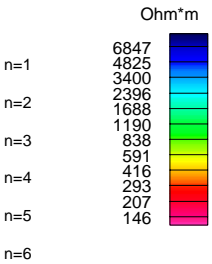


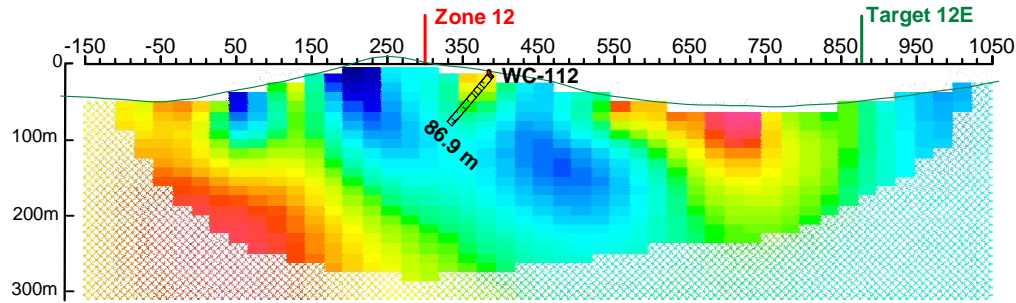
Apparent Resistivity  
Ohm\*m



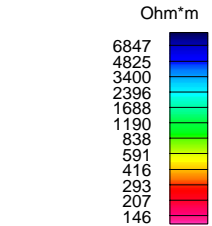
Apparent Resistivity



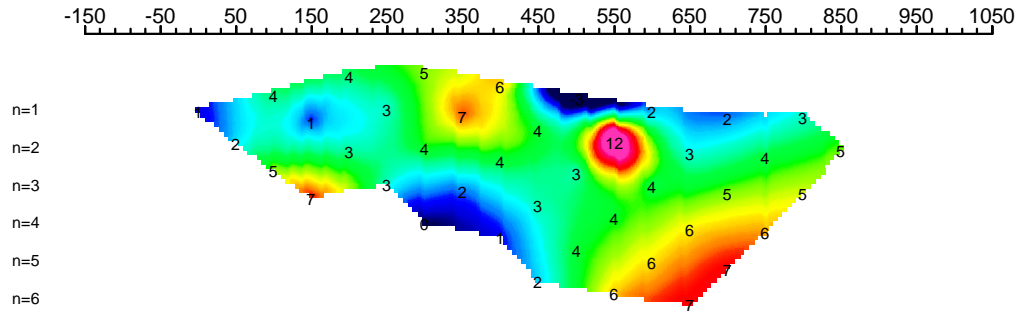
Resistivity Model  
Ohm\*m



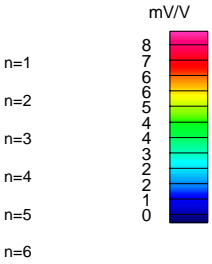
Resistivity Model



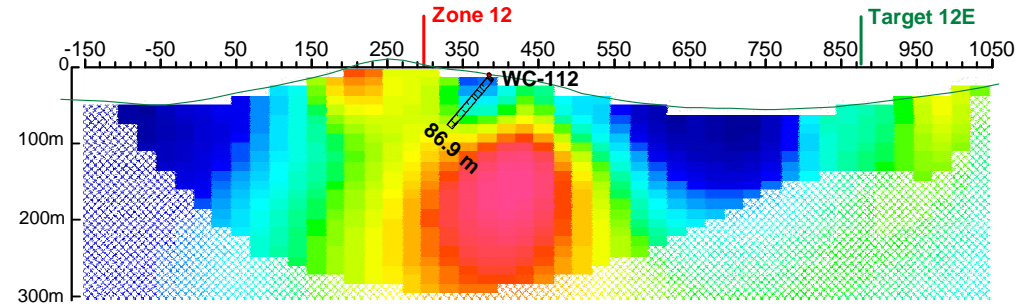
App. Chargeability  
mV/V



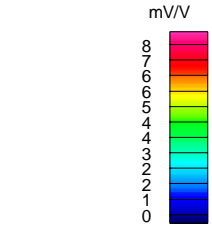
App. Chargeability



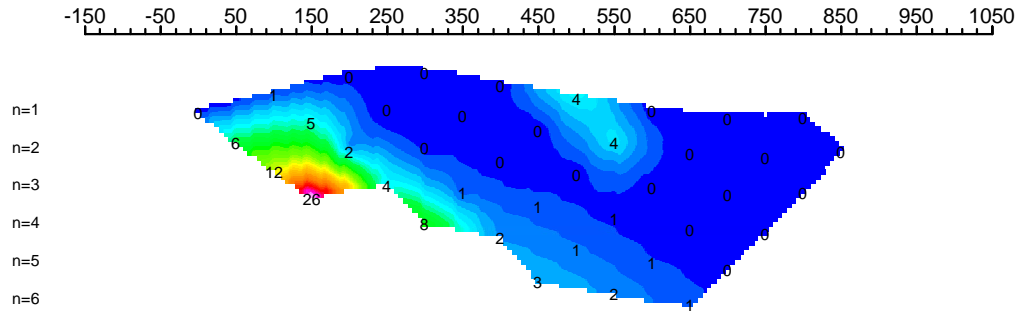
Chargeability Model  
mV/V



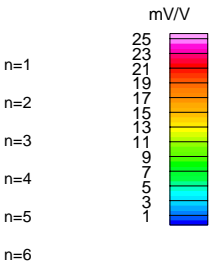
Chargeability Model



App. Chg. Error  
mV/V

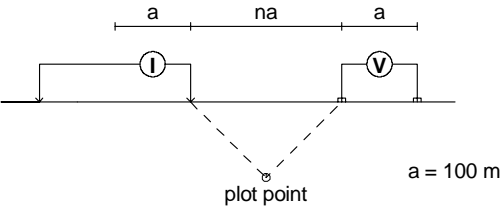


App. Chg. Error



# COMPOSITE SECTION PLOT L5600S

Modified Pole-Dipole Array



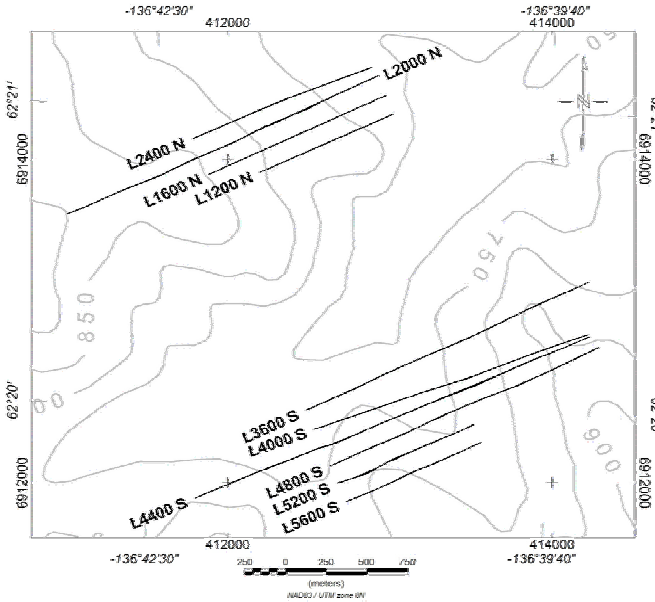
Stationary electrode at 150W (moving E).

Receiver: Iris ElrecPro

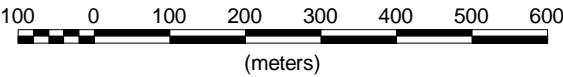
Transmitter: GDD Tx-II 3.6kW

Data File: Line 5600S-100m-Final.xyz

Dates Surveyed : Aug 26 - Sept 10, 2007



Scale 1:10000



No Vertical Exaggeration

WESTERN COPPER CORPORATION

INDUCED POLARIZATION SURVEY  
CARMACKS COPPER PROJECT  
COMPOSITE SECTION L5600S - 100m DIPOLES

Mining District: Whitehorse  
NTS: 115 I/07  
Job: WRN-7506-YT

Datum: Local Grid  
Drawn by: SW  
Date: 26 Dec 07

AURORA GEOSCIENCES LTD.